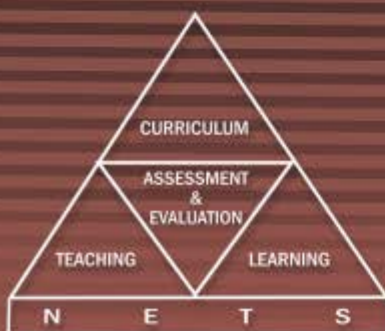


Grade 5 Scholarship Examination

2021



Performance of Candidates

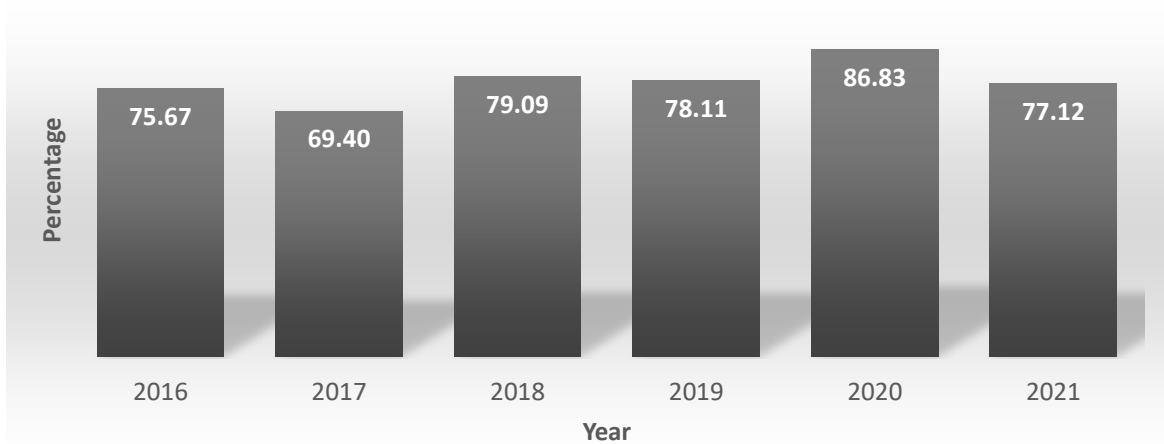


RESEARCH & DEVELOPMENT (SCHOOL EXAMINATIONS) BRANCH
DEPARTMENT OF EXAMINATIONS - SRI LANKA
NATIONAL EVALUATION & TESTING SERVICE

A Publication of
Research & Development (School Examinations) Branch
Department of Examinations, Sri Lanka
National Evaluation & Testing Service

**Table 1 : Grade 5 Scholarship Examinations 2016 - 2021
Performance of Candidates**

Year		2016	2017	2018	2019	2020	2021
No. Sat		343,757	350,462	350,191	332,168	326,264	335,158
Obtained marks 70 or above (35 or above for each paper)	No.	260,130	243,236	276,978	259,445	283,305	258,481
	%	75.67	69.40	79.09	78.11	86.83	77.12
Obtained marks 100 or above (50 or above for each paper)	No.				190,151	215,696	161,202
	%				57.25	66.11	48.10
Equal or above the Cut-Off (Qualified to receive bursaries and apply for schools)	No.	32,646	33,163	36,144	47,667	47,193	47,536
	%	9.50	9.46	10.32	14.35	14.46	14.18
Mean of Marks		107.86	106.43	117.98	114.38	125.65	109.31
Standard Deviation of Marks		35.17	38.23	37.58	36.85	36.42	34.75



**Figure 1 : Grade 5 Scholarship Examinations 2016 - 2021
Percentage of Candidates who Obtained Marks 70 or above (35 or Above for Each Paper)**

Table 2: Grade 5 Scholarship Examinations 2012 - 2021

Year	Common Cut-Off marks		No. Sat	On or Above the Cut-Off (Qualified to Receive Bursaries and Apply for Schools)		Obtained marks 70 or above (35 or Above for Each Paper)	
	Sinhala Medium	Tamil Medium		No	%	No	%
2013	160	156	322,455	32,617	10.12	223,908	69.44
2014	163	159	327,648	32,735	9.99	258,700	78.96
2015	160	154	333,672	31,853	9.55	254,690	76.33
2016	159	153	343,757	32,646	9.50	260,130	75.67
2017	164	156	350,462	33,163	9.46	243,236	69.40
2018	168	165	350,191	36,144	10.32	276,978	79.09
2019	159	154	332,168	47,667	14.35	259,445	78.11
2020	169	162	326,264	47,193	14.46	283,305	86.83
2021	152	149	335,158	47,536	14.18	258,481	77.12

Table 3 : Distribution of Candidates Who Sat the Examination, Obtained Marks On or Above the Cut Off, 100 or Above and 70 or Above by Province

Province	No. Sat	On or Above the Cut-Off		Obtained Marks 100 or Above (50 or Above for Each Paper)		Obtained marks 70 or Above (35 or Above for Each Paper)	
		No.	%	No.	%	No.	%
2 Central	44,044	4,689	10.65	19,145	43.47	32,935	74.78
3 Southern	42,051	6,453	15.35	21,666	51.52	33,309	79.21
4 Northern	18,239	2,895	15.87	8,434	46.24	13,730	75.28
5 Eastern	30,387	3,856	12.69	12,548	41.29	21,704	71.43
6 North Western	41,137	6,175	15.01	21,224	51.59	32,890	79.95
7 North Central	25,640	4,094	15.97	12,323	48.06	19,936	77.75
8 Uva	23,607	3,660	15.50	11,119	47.10	18,330	77.65
9 Sabaragamuwa	31,632	5,085	16.08	16,495	52.15	25,315	80.03
All Island	335,158	47,536	14.18	161,202	48.10	258,481	77.12

Performance of Candidates in 2020 & 2021 by Province

(Arranged in the Descending Order of the Percentage of "Obtained Marks 70 or Above")

Table 4a: Distribution of Candidates Who Obtained Marks 70 or Above by Province **2020**

Province	No. Sat	Obtained Marks 70 or Above	
		No.	%
1 Southern	40,470	36,123	89.26
2 North Western	40,042	35,719	89.20
3 Sabaragamuwa	30,774	27,258	88.57
4 Western	76,470	67,277	87.98
5 North Central	24,877	21,820	87.71
6 Uva	22,832	19,883	87.08
7 Central	43,021	36,472	84.78
8 Northern	18,097	15,079	83.32
9 Eastern	29,681	23,674	79.76
Island	326,264	283,305	86.83

Table 4b: Distribution of Candidates Who Obtained Marks 70 or Above by Province **2021**

Province	No. Sat	Obtained Marks 70 or Above	
		No.	%
1 Sabaragamuwa	31,632	25,315	80.03
2 North Western	41,137	32,890	79.95
3 Southern	42,051	33,309	79.21
4 North Central	25,640	19,936	77.75
5 Uva	23,607	18,330	77.65
6 Western	78,421	60,332	76.93
7 Northern	18,239	13,730	75.28
8 Central	44,044	32,935	74.78
9 Eastern	30,387	21,704	71.43
Island	335,158	258,481	77.12

Performance of Candidates in 2020 & 2021 by Province

(Arranged in the Descending Order of the Percentage of "On or Above the Cut-Off")

Table 5a: Distribution of Candidates Who Obtained Marks On or Above the Cut-Off by Province **2020**

Province	No. Sat	On or Above the Cut-Off	
		No.	%
1 Northern	18,097	3,175	17.54
2 Sabaragamuwa	30,774	4,999	16.24
3 North Central	24,877	4,032	16.21
4 Uva	22,832	3,682	16.13
5 North Western	40,042	6,432	16.06
6 Southern	40,470	6,311	15.59
7 Western	76,470	10,384	13.58
8 Eastern	29,681	3,750	12.63
9 Central	43,021	4,428	10.29
All Island	326,264	47,193	14.46

Table 5b: Distribution of Candidates Who Obtained Marks On or Above the Cut-Off by Province **2021**

Province	No. Sat	On or Above the Cut-Off	
		No.	%
1 Sabaragamuwa	31,632	5,085	16.08
2 North Central	25,640	4,094	15.97
3 Northern	18,239	2,895	15.87
4 Uva	23,607	3,660	15.50
5 Southern	42,051	6,453	15.35
6 North Western	41,137	6,175	15.01
7 Western	78,421	10,629	13.55
8 Eastern	30,387	3,856	12.69
9 Central	44,044	4,689	10.65
All Island	335,158	47,536	14.18

Table 6: Distribution of Candidates Who Sat the Examination, Obtained Marks On or Above the Cut Off, 100 or Above and 70 or Above by District

District	No. Sat	On or Above the Cut-Off		Obtained Marks 100 or Above (50 or Above for Each Paper)		Obtained Marks 70 or Above (35 or Above for Each Paper)	
		No.	%	No.	%	No.	%
1 Colombo	29,348	3,940	13.43	14,039	47.84	22,216	75.70
2 Gampaha	30,356	4,314	14.21	15,389	50.70	23,904	78.75
3 Kalutara	18,717	2,375	12.69	8,820	47.12	14,212	75.93
4 Kandy	22,186	2,330	10.50	10,167	45.83	16,982	76.54
5 Matale	8,725	1,026	11.76	4,120	47.22	6,712	76.93
6 Nuwara Eliya	13,133	1,333	10.15	4,858	36.99	9,241	70.36
7 Galle	17,071	2,291	13.42	8,391	49.15	13,250	77.62
8 Matara	13,429	2,009	14.96	7,071	52.65	10,691	79.61
9 Hambantota	11,551	2,153	18.64	6,204	53.71	9,368	81.10
10 Jaffna	8,754	1,695	19.36	4,439	50.71	6,809	77.78
11 Kilinochchi	2,280	326	14.30	996	43.68	1,684	73.86
12 Mannar	2,113	200	9.47	801	37.91	1,500	70.99
13 Vavuniya	3,023	401	13.26	1,284	42.47	2,197	72.68
14 Mullaitivu	2,069	273	13.19	914	44.18	1,540	74.43
15 Batticaloa	9,753	1,271	13.03	3,943	40.43	6,617	67.85
16 Ampara	12,848	1,793	13.96	5,787	45.04	9,838	76.57
17 Trincomalee	7,786	792	10.17	2,818	36.19	5,249	67.42
18 Kurunegala	27,639	4,508	16.31	15,750	56.98	23,222	84.02
19 Puttalam	13,498	1,667	12.35	5,474	40.55	9,668	71.63
20 Anuradhapura	17,740	2,788	15.72	8,344	47.03	13,636	76.87
21 Polonnaruwa	7,900	1,306	16.53	3,979	50.37	6,300	79.75
22 Badulla	14,296	2,262	15.82	6,729	47.07	11,105	77.68
23 Monaragala	9,311	1,398	15.01	4,390	47.15	7,225	77.60
24 Ratnapura	18,245	3,173	17.39	9,360	51.30	14,447	79.18
25 Kegalle	13,387	1,912	14.28	7,135	53.30	10,868	81.18
All Island	335,158	47,536	14.18	161,202	48.10	258,481	77.12

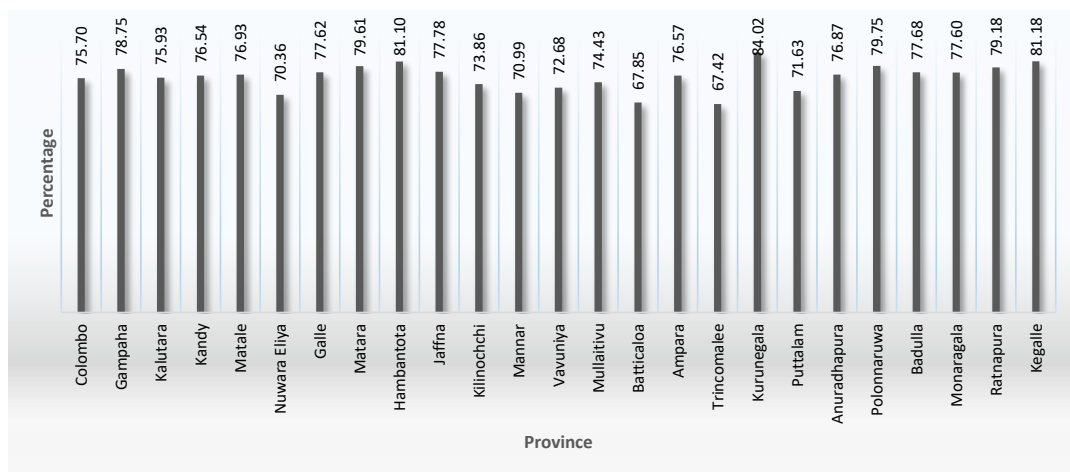


Figure 2: Distribution of the Percentage of Candidates Who Obtained Marks 70 or Above by District

Table 7a: Distribution of Candidates Who Sat the Examination, Obtained Marks 70 or Above by District **2020**

District	No. Sat	Obtained marks 70 or above (35 or Above for Each Paper)	
		No.	%
1 Kurunegala	27,177	25,108	92.39
2 Hambantota	10,883	9,880	90.78
3 Gampaha	29,300	26,403	90.11
4 Kegalle	13,037	11,649	89.35
5 Matara	20,305	18,046	88.87
6 Polonnaruwa	7,621	6,737	88.40
7 Galle	9,282	8,197	88.31
8 Ratnapura	17,737	15,609	88.00
9 Monaragala	8,677	7,588	87.45
10 Anuradhapura	17,256	15,083	87.41
11 Kandy	21,979	19,105	86.92
12 Matale	8,380	7,281	86.89
13 Badulla	14,155	12,295	86.86
14 Kalutara	18,148	15,737	86.71
15 Colombo	29,022	25,137	86.61
16 Jaffna	8,326	7,063	84.83
17 Ampara	12,722	10,791	84.82
18 Vavuniya	2,964	2,470	83.33
19 Mullaitivu	2,343	1,942	82.89
20 Puttalam	12,865	10,611	82.48
21 Mannar	1,961	1,589	81.03
22 Kilinochchi	2,503	2,015	80.50
23 Nuwara Eliya	12,662	10,086	79.66
24 Batticaloa	9,366	7,175	76.61
25 Trincomalee	7,593	5,708	75.17
All Island	326,264	283,305	86.83

Table 7b: Distribution of Candidates Who Sat the Examination, Obtained Marks 70 or Above by District **2021**

District	No. Sat	Obtained marks 70 or above (35 or Above for Each Paper)	
		No.	%
1 Kurunegala	27,639	23,222	84.02
2 Kegalle	13,387	10,868	81.18
3 Hambantota	11,551	9,368	81.10
4 Polonnaruwa	7,900	6,300	79.75
5 Matara	13,429	10,691	79.61
6 Ratnapura	18,245	14,447	79.18
7 Gampaha	30,356	23,904	78.75
8 Jaffna	8,754	6,809	77.78
9 Badulla	14,296	11,105	77.68
10 Galle	17,071	13,250	77.62
11 Monaragala	9,311	7,225	77.60
12 Matale	8,725	6,712	76.93
13 Anuradhapura	17,740	13,636	76.87
14 Ampara	12,848	9,838	76.57
15 Kandy	22,186	16,982	76.54
16 Kalutara	18,717	14,212	75.93
17 Colombo	29,348	22,216	75.70
18 Mullaitivu	2,069	1,540	74.43
19 Kilinochchi	2,280	1,684	73.86
20 Vavuniya	3,023	2,197	72.68
21 Puttalam	13,498	9,668	71.63
22 Mannar	2,113	1,500	70.99
23 Nuwara Eliya	13,133	9,241	70.36
24 Batticaloa	9,753	6,617	67.85
25 Trincomalee	7,786	5,249	67.42
All Island	335,158	258,481	77.12

Table 8a: Distribution of Candidates Who Sat the Examination, Obtained Marks On or Above the Cut-Off by District

2020

District	No. Sat	Obtained Marks On or Above the Cut-Off	
		No.	%
1 Jaffna	8,326	1,736	20.85
2 Hambantota	10,883	2,111	19.40
3 Kurunegala	27,177	4,857	17.87
4 Ratnapura	17,737	3,093	17.44
5 Vavuniya	2,964	495	16.70
6 Badulla	14,155	2,325	16.43
7 Anuradhapura	17,256	2,834	16.42
8 Kilinochchi	2,503	406	16.22
9 Polonnaruwa	7,621	1,198	15.72
10 Monaragala	8,677	1,357	15.64
11 Mullaitivu	2,343	361	15.41
12 Matara	20,305	3,040	14.97
13 Gampaha	29,300	4,284	14.62
14 Kegalle	13,037	1,906	14.62
15 Ampara	12,722	1,710	13.44
16 Batticaloa	9,366	1,230	13.13
17 Colombo	29,022	3,789	13.06
18 Kalutara	18,148	2,311	12.73
19 Galle	9,282	1,160	12.50
20 Puttalam	12,865	1,575	12.24
21 Matale	8,380	947	11.30
22 Trincomalee	7,593	810	10.67
23 Kandy	21,979	2,297	10.45
24 Nuwara Eliya	12,662	1,184	9.35
25 Mannar	1,961	177	9.03
All Island	326,264	47,193	14.46

Table 8b: Distribution of Candidates Who Sat the Examination, Obtained Marks On or Above the Cut-Off by District

2021

District	No. Sat	Obtained Marks On or Above the Cut-Off	
		No.	%
1 Jaffna	8,754	1,695	19.36
2 Hambantota	11,551	2,153	18.64
3 Ratnapura	18,245	3,173	17.39
4 Polonnaruwa	7,900	1,306	16.53
5 Kurunegala	27,639	4,508	16.31
6 Badulla	14,296	2,262	15.82
7 Anuradhapura	17,740	2,788	15.72
8 Monaragala	9,311	1,398	15.01
9 Matara	13,429	2,009	14.96
10 Kilinochchi	2,280	326	14.30
11 Kegalle	13,387	1,912	14.28
12 Gampaha	30,356	4,314	14.21
13 Ampara	12,848	1,793	13.96
14 Colombo	29,348	3,940	13.43
15 Galle	17,071	2,291	13.42
16 Vavuniya	3,023	401	13.26
17 Mullaitivu	2,069	273	13.19
18 Batticaloa	9,753	1,271	13.03
19 Kalutara	18,717	2,375	12.69
20 Puttalam	13,498	1,667	12.35
21 Matale	8,725	1,026	11.76
22 Kandy	22,186	2,330	10.50
23 Trincomalee	7,786	792	10.17
24 Nuwara Eliya	13,133	1,333	10.15
25 Mannar	2,113	200	9.47
All Island	335,158	47,536	14.18

Table 9: Distribution of Candidates Who Sat the Examination, Obtained Marks 70 or Above by Education Zone

Education Zone	No. Sat	Obtained Marks 70 or Above (35 or Above for Each Paper)		Education Zone	No. Sat	Obtained Marks 70 or Above (35 or Above for Each Paper)	
		No.	%			No.	%
1 Nikaweratiya	3,807	3,361	88.28	51 Ambalangoda	3,457	2,654	76.77
2 Kegalle	4,573	3,960	86.60	52 Galenbindunuwewa	2,330	1,779	76.35
3 Kuliyaipitiya	4,879	4,148	85.02	53 Thirukkivil	1,010	771	76.34
4 Gampaha	8,291	7,028	84.77	54 Hanguranketha	1,746	1,331	76.23
5 Mulatiyana-Hakmana	2,695	2,283	84.71	55 Udugama	2,324	1,771	76.20
6 Walasmulla	2,908	2,440	83.91	56 Piliyandala	5,199	3,960	76.17
7 Giriulla	4,589	3,850	83.90	57 Matale	3,924	2,974	75.79
8 Maho	5,151	4,316	83.79	58 Dehiowita	4,571	3,462	75.74
9 Tanamalwila	1,627	1,355	83.28	59 Teldeniya	2,330	1,763	75.67
10 Kurunegala	5,647	4,685	82.96	60 Wattegama	3,228	2,436	75.46
11 Tangalle	3,143	2,606	82.91	61 Chilaw	6,019	4,538	75.39
12 Balangoda	3,238	2,683	82.86	62 Viyaluwa	1,201	905	75.35
13 Kandy	6,277	5,192	82.71	63 Nivitigala	3,299	2,483	75.27
14 Polonnaruwa	2,380	1,949	81.89	64 Mullaitivu	1,466	1,103	75.24
15 Dehiattakandiya	1,160	949	81.81	65 Dimbulagala	2,245	1,688	75.19
16 Akuressa	2,502	2,043	81.65	66 Welimada	2,988	2,231	74.67
17 Thenmarachchi	978	797	81.49	67 Anuradhapura	5,447	4,064	74.61
18 Hingurakgoda	3,275	2,663	81.31	68 Sammanthurai	1,932	1,436	74.33
19 Bandarawela	3,223	2,620	81.29	69 Deniyaya (Morawaka)	2,857	2,123	74.31
20 Tambuttegama	3,411	2,772	81.27	70 Monaragala	3,089	2,291	74.17
21 Jaffna	2,968	2,411	81.23	71 Kebithigollewa	2,949	2,183	74.03
22 Mawanella	4,248	3,448	81.17	72 Kalutara	9,029	6,678	73.96
23 Ibbagamuwa	3,566	2,862	80.26	73 Batticaloa Central	3,142	2,317	73.74
24 Embilipitiya	5,248	4,201	80.05	74 Hatton	4,007	2,954	73.72
25 Homagama	5,429	4,341	79.96	75 Valikamam	2,674	1,967	73.56
26 Batticaloa	2,050	1,637	79.85	76 Akkaraipattu	2,185	1,606	73.50
27 Minuwangoda	6,479	5,161	79.66	77 Negombo	7,840	5,750	73.34
28 Badulla	2,809	2,235	79.57	78 Passara	1,485	1,089	73.33
29 Kilinochchi North	601	477	79.37	79 Vavuniya South	2,403	1,760	73.24
30 Ampara	2,893	2,288	79.09	80 Walapane	1,782	1,305	73.23
31 Matara	5,375	4,242	78.92	81 Mahaoya	806	590	73.20
32 Kekirawa	3,603	2,838	78.77	82 Katugastota	3,449	2,510	72.77
33 Sri Jayawardhanapura	7,387	5,817	78.75	83 Thunukkai	603	437	72.47
34 Rathnapura	6,455	5,078	78.67	84 Islands	636	459	72.17
35 Wellawaya	2,406	1,891	78.60	85 Kilinochchi South	1,679	1,207	71.89
36 Hambantota	5,500	4,322	78.58	86 Mannar	1,636	1,171	71.58
37 Kantale	1,343	1,055	78.56	87 Colombo	11,333	8,098	71.46
38 Matugama	3,682	2,892	78.54	88 Gampola	4,304	3,074	71.42
39 Wadamarachchi	1,498	1,175	78.44	89 Muttur	1,519	1,082	71.23
40 Elpitiya	3,866	3,025	78.25	90 Vavuniya North	620	437	70.48
41 Galewela	3,215	2,514	78.20	91 Kothmale	1,691	1,189	70.31
42 Mahiyanganaya	2,590	2,025	78.19	92 Trincomalee	2,503	1,730	69.12
43 Galle	7,424	5,800	78.13	93 Madhu	477	329	68.97
44 Wilgamuwa	880	681	77.39	94 Puttalam	7,479	5,130	68.59
45 Denuwara	2,618	2,024	77.31	95 Trincomalee North	528	346	65.53
46 Horana	6,006	4,642	77.29	96 Padirippu	1,661	1,083	65.20
47 Bibile	2,189	1,688	77.11	97 Nuwara Eliya	3,887	2,445	62.90
48 Kelaniya	7,746	5,965	77.01	98 Batticaloa West	1,066	609	57.13
49 Naula	706	543	76.91	99 Kinniya	1,893	1,036	54.73
50 Kalmunai	2,862	2,198	76.80	100 Kalkudah	1,834	971	52.94
				All Island	335,158	258,481	77.12

Table 10: Distribution of Candidates Who Sat the Examination, Obtained Marks On or Above the Cut-Off by Education Zone

Education Zone	No. Sat	Obtained Marks On or Above the Cut-Off		Education Zone	No. Sat	Obtained Marks On or Above the Cut-Off	
		No.	%			No.	%
1 Jaffna	2,968	747	25.17	51 Ambalangoda	3,457	479	13.86
2 Batticaloa	2,050	449	21.90	52 Mawanella	4,248	586	13.79
3 Tangalle	3,143	653	20.78	53 Kandy	6,277	828	13.19
4 Gampaha	8,291	1,705	20.56	54 Naula	706	93	13.17
5 Tambuttegama	3,411	696	20.40	55 Thirukkivil	1,010	133	13.17
6 Thenmarachchi	978	192	19.63	56 Akkaraipattu	2,185	283	12.95
7 Balangoda	3,238	630	19.46	57 Islands	636	81	12.74
8 Walasmulla	2,908	559	19.22	58 Bibile	2,189	278	12.70
9 Rathnapura	6,455	1,236	19.15	59 Dimbulagala	2,245	284	12.65
10 Polonnaruwa	2,380	453	19.03	60 Elpitiya	3,866	488	12.62
11 Kuliyapitiya	4,879	928	19.02	61 Viyaluwa	1,201	151	12.57
12 Wadamarachchi	1,498	279	18.62	62 Kelaniya	7,746	969	12.51
13 Badulla	2,809	517	18.41	63 Piliyandala	5,199	646	12.43
14 Bandarawela	3,223	592	18.37	64 Kebithigollewa	2,949	365	12.38
15 Homagama	5,429	972	17.90	65 Galenbindunuwewa	2,330	285	12.23
16 Kurunegala	5,647	988	17.50	66 Hatton	4,007	489	12.20
17 Hingurakgoda	3,275	569	17.37	67 Matugama	3,682	448	12.17
18 Akuressa	2,502	434	17.35	68 Dehiowita	4,571	555	12.14
19 Ampara	2,893	499	17.25	69 Trincomalee	2,503	303	12.11
20 Hambantota	5,500	941	17.11	70 Galewela	3,215	385	11.98
21 Tanamalwila	1,627	275	16.90	71 Ibbagamuwa	3,566	419	11.75
22 Kegalle	4,573	771	16.86	72 Matale	3,924	460	11.72
23 Wellawaya	2,406	400	16.63	73 Kalutara	9,029	1,051	11.64
24 Kekirawa	3,603	596	16.54	74 Colombo	11,333	1,250	11.03
25 Mulatiyana-Hakmana	2,695	443	16.44	75 Muttur	1,519	167	10.99
26 Maho	5,151	842	16.35	76 Kothmale	1,691	185	10.94
27 Mahiyanganaya	2,590	416	16.06	77 Puttalam	7,479	796	10.64
28 Giriulla	4,589	736	16.04	78 Udugama	2,324	245	10.54
29 Embilipitiya	5,248	833	15.87	79 Padirippu	1,661	172	10.36
30 Matara	5,375	853	15.87	80 Mannar	1,636	168	10.27
31 Nikaweratiya	3,807	595	15.63	81 Denuwara	2,618	266	10.16
32 Anuradhapura	5,447	846	15.53	82 Thunukkai	603	61	10.12
33 Kalmunai	2,862	440	15.37	83 Wilgamuwa	880	88	10.00
34 Kantale	1,343	205	15.26	84 Mahaoya	806	80	9.93
35 Minuwangoda	6,479	986	15.22	85 Wattergama	3,228	319	9.88
36 Welimada	2,988	454	15.19	86 Deniyaya (Morawaka)	2,857	279	9.77
37 Dehiattakandiya	1,160	174	15.00	87 Sammanthurai	1,932	184	9.52
38 Hanguranketha	1,746	260	14.89	88 Katugastota	3,449	323	9.37
39 Valikamam	2,674	396	14.81	89 Teldeniya	2,330	211	9.06
40 Kilinochchi North	601	88	14.64	90 Vavuniya North	620	56	9.03
41 Horana	6,006	876	14.59	91 Gampola	4,304	386	8.97
42 Batticaloa Central	3,142	458	14.58	92 Passara	1,485	132	8.89
43 Galle	7,424	1,079	14.53	93 Walapane	1,782	156	8.75
44 Sri Jayawardhanapura	7,387	1,072	14.51	94 Negombo	7,840	654	8.34
45 Chilaw	6,019	871	14.47	95 Kalkudah	1,834	133	7.25
46 Mullaitivu	1,466	212	14.46	96 Trincomalee North	528	37	7.01
47 Monaragala	3,089	445	14.41	97 Madhu	477	32	6.71
48 Nivitigala	3,299	474	14.37	98 Nuwara Eliya	3,887	240	6.17
49 Vavuniya South	2,403	345	14.36	99 Batticaloa West	1,066	59	5.53
50 Kilinochchi South	1,679	238	14.18	100 Kinniya	1,893	80	4.23
				All Island	335,158	47,536	14.18

Table 11: Distribution of Candidates Who Qualified for Bursaries Under Special Needs Category by Province

Province	No.of Candidates
1 Western	61
2 Central	29
3 Southern	26
4 Northern	50
5 Eastern	16
6 North Western	16
7 North Central	13
8 Uva	10
9 Sabaragamuwa	26
All Island	247

Table 12: Distribution of Candidates Who Qualified for Bursaries Under Special Needs Category by District

District	No.of Candidates
1 Colombo	24
2 Gampaha	21
3 Kaluthara	16
4 Kandy	12
5 Mathale	7
6 Nuwara Eliya	10
7 Galle	8
8 Mathara	8
9 Hambanthota	10
10 Jaffna	29
11 Kilinochchi	9
12 Mannar	2
13 Vavuniya	5
14 Mullaitivu	5
15 Batticaloa	5
16 Ampara	9
17 Trincomalee	2
18 Kurunegala	12
19 Puttalam	4
20 Anuradhapura	7
21 Polonnaruwa	6
22 Badulla	8
23 Monaragala	2
23 Rathnapura	18
25 Kegalle	8
All Island	247

Table 13: Frequency Distribution of Marks for the Paper I by Income Level

Class Interval	Lower Income Group				Higher Income Group				Total			
	Frq.	%	Cum.Frq.	%	Frq.	%	Cum.Frq.	%	Frq.	%	Cum.Frq.	%
91-100	96	0.05	210,076	100.00	259	0.21	125,082	100.00	355	0.11	335,158	100.00
81-90	2,274	1.08	209,980	99.95	4,565	3.65	124,823	99.79	6,839	2.04	334,803	99.89
71-80	10,697	5.09	207,706	98.87	15,083	12.06	120,258	96.14	25,780	7.69	327,964	97.85
61-70	25,008	11.90	197,009	93.78	25,170	20.12	105,175	84.08	50,178	14.97	302,184	90.16
51-60	43,254	20.59	172,001	81.88	29,519	23.60	80,005	63.96	72,773	21.71	252,006	75.19
41-50	60,021	28.57	128,747	61.29	28,132	22.49	50,486	40.36	88,153	26.30	179,233	53.48
31-40	50,240	23.92	68,726	32.71	17,295	13.83	22,354	17.87	67,535	20.15	91,080	27.18
21-30	16,648	7.92	18,486	8.80	4,636	3.71	5,059	4.04	21,284	6.35	23,545	7.03
11-20	1,563	0.74	1,838	0.87	378	0.30	423	0.34	1,941	0.58	2,261	0.67
1-10	213	0.10	275	0.13	36	0.03	45	0.04	249	0.07	320	0.10
0	62	0.03	62	0.03	9	0.01	9	0.01	71	0.02	71	0.02

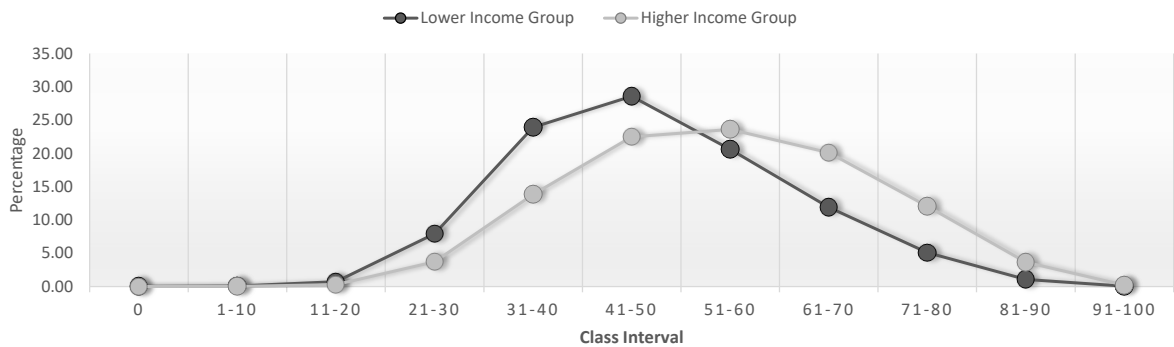


Figure 3: Frequency Distribution of Marks for the Paper I by Income Level

Table 14: Frequency Distribution of Marks for the Paper II by Income Level

Class Interval	Lower Income Group				Higher Income Group				Total			
	Frq.	%	Cum.Frq.	%	Frq.	%	Cum.Frq.	%	Frq.	%	Cum.Frq.	%
91-100	3,369	1.60	210,075	100.00	259	0.21	125,082	100.00	9,464	2.82	335,154	100.00
81-90	23,039	10.97	206,706	98.40	4,565	3.65	124,823	99.79	50,926	15.19	325,690	97.18
71-80	34,404	16.38	183,667	87.43	15,083	12.06	120,258	96.14	63,220	18.86	274,764	81.98
61-70	30,723	14.62	149,263	71.05	25,170	20.12	105,175	84.08	50,196	14.98	211,544	63.12
51-60	27,536	13.11	118,540	56.43	29,519	23.60	80,005	63.96	41,192	12.29	161,348	48.14
41-50	25,463	12.12	91,004	43.32	28,132	22.49	50,486	40.36	36,003	10.74	120,156	35.85
31-40	24,054	11.45	65,541	31.20	17,295	13.83	22,354	17.87	32,473	9.69	84,153	25.11
21-30	20,761	9.88	41,487	19.75	4,636	3.71	5,059	4.04	26,732	7.98	51,680	15.42
11-20	17,897	8.52	20,726	9.87	378	0.30	423	0.34	21,565	6.43	24,948	7.44
1-10	2,757	1.31	2,829	1.35	36	0.03	45	0.04	3,293	0.98	3,383	1.01
0	72	0.03	72	0.03	9	0.01	9	0.01	90	0.03	90	0.03

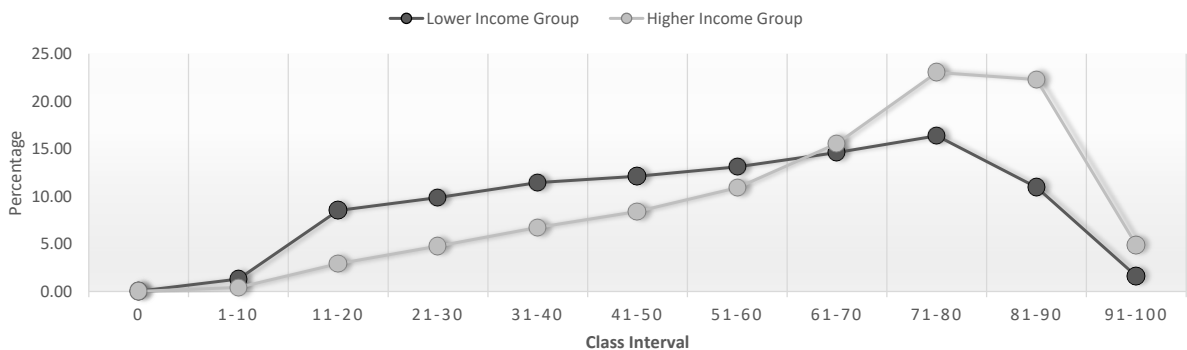


Figure 4: Frequency Distribution of Marks for the Paper II by Income Level

Table 15: Distribution of Candidates Who Sat the Examination, Obtained Marks On or Above the Cut Off, 70 or Above by Province and Gender

Province	No. Sat					Obtained Marks On or Above the Cut-Off					Obtained Marks 70 or Above			
	Total	Male	%	Female	%	Total	Male	%	Female	%	Male	%	Female	%
1 Western	78,421	39,414	50.26	39,007	49.74	10,629	5,023	47.26	5,606	52.74	28,730	47.62	31,602	52.38
2 Central	44,044	22,171	50.34	21,873	49.66	4,689	2,212	47.17	2,477	52.83	15,593	47.34	17,342	52.66
3 Southern	42,051	21,054	50.07	20,997	49.93	6,453	3,002	46.52	3,451	53.48	15,765	47.33	17,544	52.67
4 Northern	18,239	9,236	50.64	9,003	49.36	2,895	1,351	46.67	1,544	53.33	6,497	47.32	7,233	52.68
5 Eastern	30,387	15,195	50.00	15,192	50.00	3,856	1,756	45.54	2,100	54.46	10,188	46.94	11,516	53.06
6 North Western	41,137	20,879	50.75	20,258	49.25	6,175	2,871	46.49	3,304	53.51	15,879	48.28	17,011	51.72
7 North Central	25,640	12,856	50.14	12,784	49.86	4,094	1,888	46.12	2,206	53.88	9,402	47.16	10,534	52.84
8 Uva	23,607	11,933	50.55	11,674	49.45	3,660	1,690	46.17	1,970	53.83	8,701	47.47	9,629	52.53
9 Sabaragamuwa	31,632	15,885	50.22	15,747	49.78	5,085	2,313	45.49	2,772	54.51	12,078	47.71	13,237	52.29
All Island	335,158	168,623	50.31	166,535	49.69	47,536	22,106	46.50	25,430	53.50	122,833	47.52	135,648	52.48

Table 16: Distribution of Candidates Who Sat the Examination, Obtained Marks On or Above the Cut Off, 70 or Above by Province and Income Level

Province	No. Sat					Obtained Marks On or Above the Cut-Off					Obtained Marks 70 or Above			
	Total	Lower	%	Higher	%	Total	Lower	%	Higher	%	Lower	%	Higher	%
1 Western	78,421	37,949	48.39	40,472	51.61	10,629	3,230	30.39	7,399	69.61	26,118	43.29	34,214	56.71
2 Central	44,044	27,779	63.07	16,265	36.93	4,689	1,836	39.16	2,853	60.84	19,177	58.23	13,758	41.77
3 Southern	42,051	26,975	64.15	15,076	35.85	6,453	2,792	43.27	3,661	56.73	19,968	59.95	13,341	40.05
4 Northern	18,239	14,735	80.79	3,504	19.21	2,895	1,578	54.51	1,317	45.49	10,553	76.86	3,177	23.14
5 Eastern	30,387	22,693	74.68	7,694	25.32	3,856	1,871	48.52	1,985	51.48	15,008	69.15	6,696	30.85
6 North Western	41,137	27,260	66.27	13,877	33.73	6,175	2,719	44.03	3,456	55.97	20,437	62.14	12,453	37.86
7 North Central	25,640	15,241	59.44	10,399	40.56	4,094	1,694	41.38	2,400	58.62	11,057	55.46	8,879	44.54
8 Uva	23,607	15,556	65.90	8,051	34.10	3,660	1,537	41.99	2,123	58.01	11,294	61.61	7,036	38.39
9 Sabaragamuwa	31,632	21,888	69.20	9,744	30.80	5,085	2,552	50.19	2,533	49.81	16,596	65.56	8,719	34.44
All Island	335,158	210,076	62.68	125,082	37.32	47,536	19,809	41.67	27,727	58.33	150,208	58.11	108,273	41.89

