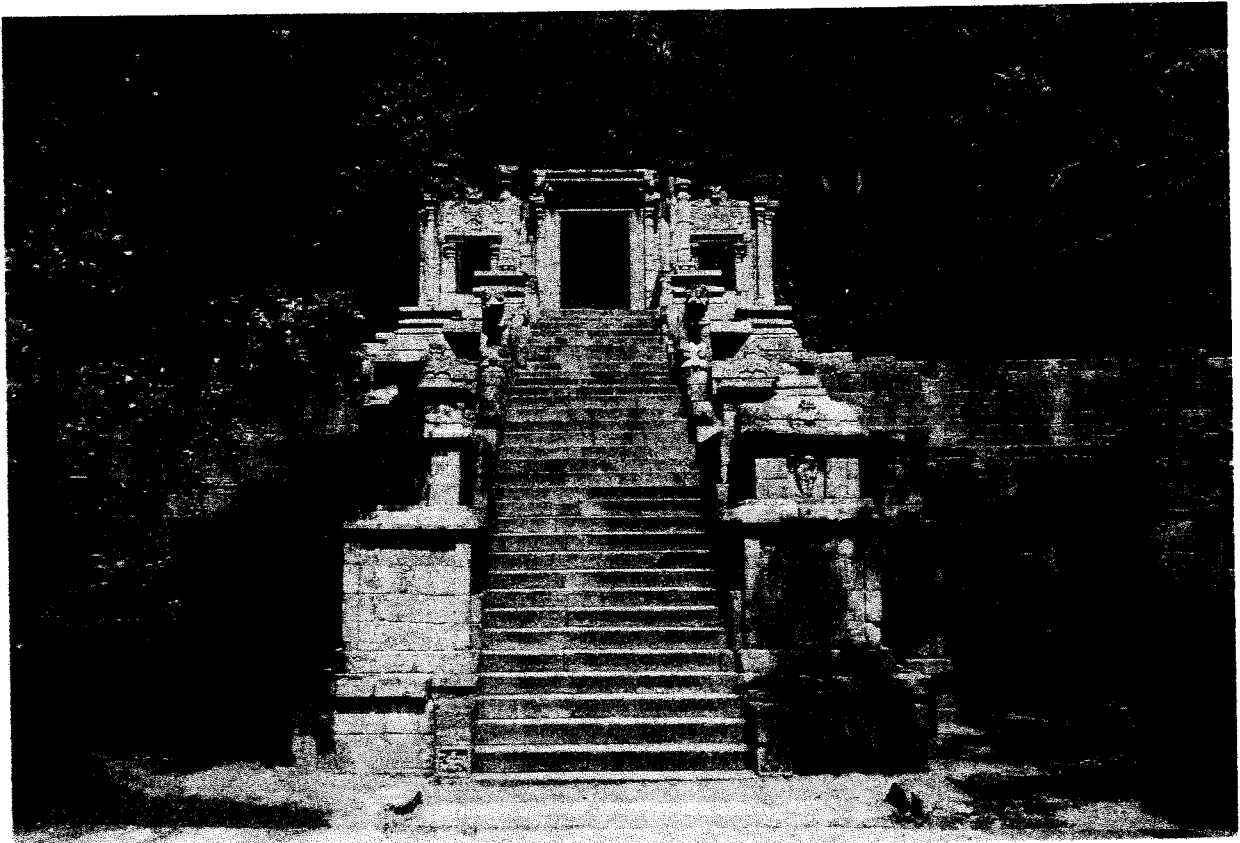


Department of Examinations - Sri Lanka  
G.C.E. (O/L) Examination - 2018

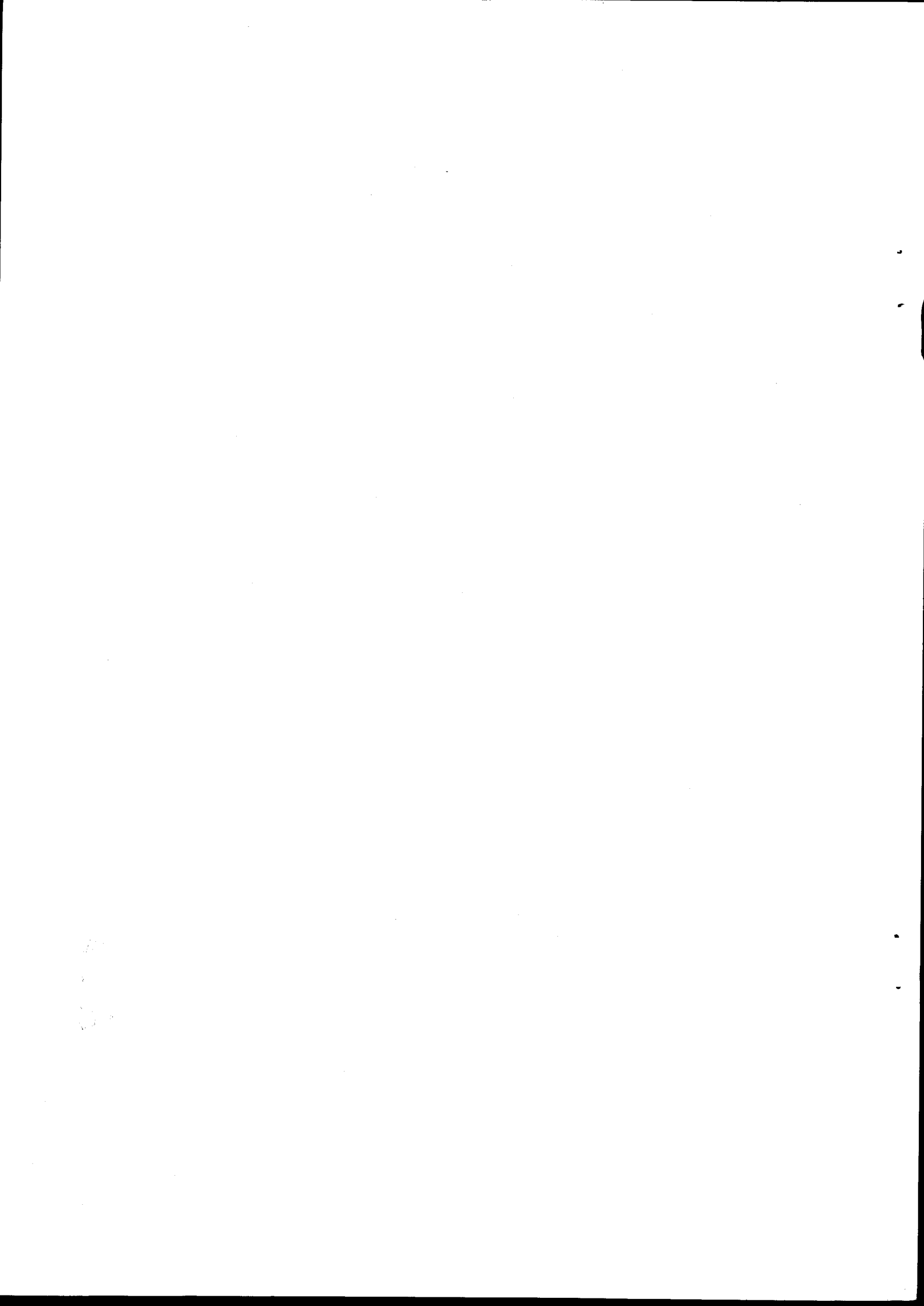
# 33 - History

## Marking Scheme



This document has been prepared for the use of Marking Examiners. Some changes would be made according to the views presented at the Chief Examiners' meeting.

Amendments to be included



**ශ්‍රී ලංකා විභාග දෙපාර්තමේන්තුව**  
**ජාතික ඇගයීම් හා පරීක්ෂණ සේවාව**

**අ.පො.ස. (සා.පෙළ) විභාගය - 2018**

**33 - ඉතිහාසය**

**I පත්‍රය - ලකුණු 2 x 40 = ලකුණු 80**

**II පත්‍රය -**

**I කොටස**

ප්‍රශ්න අංක 1 (අනිවාර්ය ප්‍රශ්නයකි.)

(අ) කොටස	-	ලකුණු	18	}	ලකුණු 30
(ආ) කොටස	-	ලකුණු	12		

**II කොටස**

ප්‍රශ්න අංක 2	-	ලකුණු	18	}	(මින්දම ප්‍රශ්න 4කට) 4 x 18 = ලකුණු 72
ප්‍රශ්න අංක 3	-	ලකුණු	18		
ප්‍රශ්න අංක 4	-	ලකුණු	18		
ප්‍රශ්න අංක 5	-	ලකුණු	18		
ප්‍රශ්න අංක 6	-	ලකුණු	18		
ප්‍රශ්න අංක 7	-	ලකුණු	18		

**III කොටස**

ප්‍රශ්න අංක 8	-	ලකුණු	18	}	(මින්දම ප්‍රශ්න 1කට) 1 x 18 = ලකුණු 18
ප්‍රශ්න අංක 9	-	ලකුණු	18		

**ලකුණු 120**

**අවසාන ලකුණු ගණනය කිරීම**

I පත්‍රයට ලකුණු	=	80
II පත්‍රයට ලකුණු	=	120
එකතුව	=	200
අවසාන ලකුණු	=	200 ÷ 2
	=	100

### Common Techniques of Marking Answer Scripts.

It is compulsory to adhere to the following standard method in marking answer scripts and entering marks into the mark sheets.

1. Use a red color ball point pen for marking. (Only Chief/Additional Chief Examiner may use a mauve color pen.)
2. Note down Examiner's Code Number and initials on the front page of each answer script.
3. Write off any numerals written wrong with a clear single line and authenticate the alterations with Examiner's initials.
4. Write down marks of each subsection in a  $\triangle$  and write the final marks of each question as a rational number in a  $\square$  with the question number. Use the column assigned for Examiners to write down marks.

Example:

Question No. 03

(i)	.....	√	$\triangle$ $\frac{4}{5}$
	.....		
	.....		
(ii)	.....	√	$\triangle$ $\frac{3}{5}$
	.....		
	.....		
(iii)	.....	√	$\triangle$ $\frac{3}{5}$
	.....		
	.....		

03	(i)	$\frac{4}{5}$	+	(ii)	$\frac{3}{5}$	+	(iii)	$\frac{3}{5}$	=	$\frac{10}{15}$
----	-----	---------------	---	------	---------------	---	-------	---------------	---	-----------------

#### MCQ answer scripts: (Template)

1. Mark the correct options on the template according to the Marking Scheme. Cut off the marked windows with a blade. Cut off the cages for Index Number and the number of correct options so as to be able to keep the template correctly on the answer script. Cut off a blank space to the right of each options column to mark the answers. Submit the prepared template to the Chief Examiner for approval.
2. Then, check the answer scripts carefully. If there are more than one or no answers Marked to a certain question write off the options with a line. Sometimes candidates may have erased an option marked previously and selected another option. In such occasions, if the erasure is not clear write off those options too.

3. Place the template on the answer script correctly. Mark the right answers with a 'v' and the wrong answers with a 'X' against the options column. Write down the number of correct answers inside the cage given under each column. Then, add those numbers and write the number of correct answers in the relevant cage.

### **Structured essay type and assay type answer scripts:**

1. Cross off any pages left blank by candidates. Underline wrong or unsuitable answers. Show areas where marks can be offered with check marks.
2. Use the right margin of the overland paper to write down the marks.
3. Write down the marks given for each question against the question number in the relevant cage on the front page in two digits. Selection of questions should be in accordance with the instructions given in the question paper. Mark all answers and transfer the marks to the front page, and write off answers with lower marks if extra questions have been answered against instructions.
4. Add the total carefully and write in the relevant cage on the front page. Turn pages of answer script and add all the marks given for all answers again. Check whether that total tallies with the total marks written on the front page.

### **Preparation Of Mark Sheets.**

Except for the subjects with a single question paper, final marks of two papers will not be calculated within the evaluation board this time. Therefore add separate mark sheets for each of the question paper. Write paper 01 marks in the paper 01 column of the mark sheet and write them in words too. Write paper II Marks in the paper II Column and right the relevant details. For the subject 43 Art, marks for Papers 01, 02 and 03 should be entered numerically in the mark sheets.

For subjects 21 Sinhala language and literature and 22 Tamil Language and literature, paper I marks once entered numerally should be written in words. For the papers II and III enter the detailed marks separately and put the total in each paper in the relevant column.

Final marks for paper I, paper II or paper III should always be rounded up to the nearest whole number and they should never be kept as decimal values.

\*\*\*

**G.C.E. (O/L Examination) - 2018****33 - History****Scheme of Marking - Paper II**

- Paper I - One Answer carries 02 Marks  
 $02 \times 40 = 80$
- Paper II - This paper consists of parts, Part I, Part II and Part III
- Part I - Consists of a compulsory question. It has been divided into 2 sub parts , A and B.
- A. I - Marking & naming 12 Places of historical importance in an outline map of sri lanka. These places are related to sri lankan History.
- II - Marking & naming 6 places of historical importance in an outline map of the word.
- $12 + 6 = 18$
- B. Consists of 12 short questions, carries 12 marks.
- $1 \times 12 = 12$   
30
- Part II - Expected to answer 4 out of 6 question from the themes, related to Sri lanka History.
- Part III - Expected to answer 1 out of 2 questions from the themes related to world history

There are 4 sub parts of each question of part II and III and carries 3+4+5+6 marks respectively (Final marks for each question is 18, with regard to part II, and III of paper II)

## Computation of final marks.

Paper I	-	80
Paper II	-	120
		$200 / 2 = 100$

සියලු ම හිමිකම් ඇවිරිණි / முழுப் பதிப்புரிமையுடையது / All Rights Reserved

ශ්‍රී ලංකා විභාග දෙපාර්තමේන්තුව ශ්‍රී ලංකා විභාග දෙපාර්තමේන්තුව ශ්‍රී ලංකා විභාග දෙපාර්තමේන්තුව ශ්‍රී ලංකා විභාග දෙපාර්තමේන්තුව ශ්‍රී ලංකා විභාග දෙපාර්තමේන්තුව  
 Department of Examinations, Sri Lanka Department of Examinations, Sri Lanka Department of Examinations, Sri Lanka Department of Examinations, Sri Lanka Department of Examinations, Sri Lanka  
 33 E I

අධ්‍යයන පොදු සහතික පත්‍ර (සාමාන්‍ය පෙළ) විභාගය, 2018 දෙසැම්බර්  
 கல்விப் பொதுத் தராதரப் பத்திர (சாதாரண தர)ப் பரீட்சை, 2018 டிசெம்பர்  
 General Certificate of Education (Ord. Level) Examination, December 2018

05.12.2018 / 1300 - 1400

ඉතිහාසය I  
 வரலாறு I  
 History I

පැය එකයි  
 ஒரு மணித்தியாலம்  
 One hour

- Note:** (i) Answer all questions. This paper carries 80 marks.  
 (ii) In each of the questions from 1 to 40, pick one of the alternatives (1), (2), (3), (4) which is correct or most appropriate.  
 (iii) Mark a cross (X) on the number corresponding to your choice in the answer sheet provided.  
 (iv) Further instructions are given on the back of the answer sheet. Follow them carefully.

- Mahāvamsa is specific because of
  - containing continuous political and religious informations.
  - being recorded the contemporary events.
  - being the oldest chronicle.
  - trustworthiness of the contained information.
- In archaeological excavations, Chinese, Roman, Arabic and Indian coins have been found from various places of Sri Lanka. The most important fact revealed from these, is that
  - there was a developed economic pattern in Sri Lanka.
  - use of coins was popular in Sri Lanka.
  - there was a developed trade relation between Sri Lanka and foreign countries.
  - tourists had come to Sri Lanka from various countries of the world.
- In connection with what period of following, are the sources such as Sandesha Kāvya, Prasasti Kāvya and Hatan Kāvya important in studying the history of Sri Lanka?
  - From the period of Polonnaruva to Dambadeniya
  - From the period of Dambadeniya to Gampola
  - From the period of Gampola to Kotte
  - From the period of Kotte to Kandy
- The symbol 'sun-moon' has been used in the inscriptions to illustrate
  - prosperity. (2) stability. (3) rain. (4) state ownership.
- We should protect our artifacts because they are
  - the sources which show Sri Lankan identity.
  - important for tourism.
  - Buddhist and Hindu architectural creations.
  - the sources which show the talented crafts of past.
- The place which is considered as the oldest place where the information of the pre-historic man has been found, is
  - Kuruviata Batadomba lena. (2) Kitulgala Beli lena.
  - Pahiyangala lena. (4) Atthanagoda Alu lena.
- The column I below has some connection with the technological creations given in the column II. When the column II is matched according to the sequence of the column I, what is the correct answer?

Column I	Column II
1. Pure alabaster	A - Tank
2. Speedy wind power	B - Micro tools
3. Small hills	C - Anicut (Amuna)
4. Bend of a river	D - Iron leaching

- (1) A, B, C, D (2) B, D, A, C (3) C, B, A, D (4) D, A, B, C

8. It is considered that the expansion of settlements connected with the small tanks system were begun outside the river valleys of the dry zone of Sri Lanka in the  
 (1) pre-historic period. (2) proto-historic period.  
 (3) early historic period. (4) historic period.
9. Who was in charge of the small tank systems?  
 (1) Mapurumuka (2) Parumaka (3) Gamika (4) Gahapati
10. One who constructed a full fledged capital for an organizational centralized administration was  
 (1) Vijaya. (2) Anurādhā. (3) Upatissa. (4) Pandukābhaya.
11. A good example which could be given to show that special consideration has been taken with regard to the waste management in the architectural creations of the past is  
 (1) Palace of Sigiriya. (2) Ālāhana Pirivena.  
 (3) Alms-giving hall at Mihintale. (4) Mādirigiriya Vatadāge.
12. There are evidence to show that there were three harvests of cultivation in ancient Sri Lanka. The decision of cultivating the third harvest was taken on the  
 (1) discretion of the leader of the village. (2) amount of crop received in the last harvest.  
 (3) interest of the farmers. (4) possibility of receiving water.
13. The name used by the Arabs to describe Sri Lanka was  
 (1) Seylan. (2) Taprobrane. (3) Serendib. (4) Tambapaṇṇi.
14. During the Polonnaruva period the name 'Gauta Pillars' (Gauto Kanu) was used to show  
 (1) the distance of the roads.  
 (2) the ownership of the state.  
 (3) the length of the canals.  
 (4) the boundaries of the sanctuaries (Abhaya Bhūmi).
15. Out of the historical events given under following A, B, C and D, what is the answer which contain the event that may not be known by a person who lived during the period of the invasion of Kālinga Māgha?  
 A - Arrival of the Arab tourist Iban Bhatuta to Sri Lanka  
 B - Construction of the Ruvanvāli stupa  
 C - Selecting Sigiriya by King Kāsyapa I as his administrative centre  
 D - Ruling Jaffna by prince Sapumal for a certain period  
 (1) A and B (2) A and D (3) B and D (4) C and D
16. An example to show that in the architectural creations which were constructed to bear a large weight, a method similar to the modern concrete technology has been used, is seen in  
 (1) the foundation of Ruvanweli Sāya. (2) the stone bridge over Malvatu Oya.  
 (3) the sluice at Maduru Oya. (4) the tank bund of Sigiriya.
17. The best example to give for woman's contribution to the confirmation of the inheritance of kingship in Sri Lanka is the marriage of  
 (1) King Vimaladharmasuriya I with Dona Katherina.  
 (2) King Vijayabāhu I with Princess Thilokasundari.  
 (3) a Pāndya prince with Princess Mitthā.  
 (4) Prince Sāliya with Asokamāla.
18. Which of the following ruling period mentions the invasion of a Chinese army to this country under the General Cheng-Ho?  
 (1) Dambadeniya (2) Yapahuva (3) Gampola (4) Kotte
19. For what trade commodity did the European nations involve in a hard competition to get from Sri Lanka ?  
 (1) Cinnamon (2) Gem (3) Arecanut (4) Elephant tusks



20. Among the rulers given from A – F in the following, which answer contain about the rulers who followed a counteraction policy against the Portuguese?
- A - Don Juan Dharmapala                      B - Edirmanna Singham  
C - Sankili    D - Rājasimha I  
E - Bhuvanekabāhu VII                          F - Varodayan
- (1) A and B                      (2) B and C                      (3) C and D                      (4) E and F
21. Few features connected to the constitutional reforms during the British administration in Sri Lanka are given below. What is the answer which states the historical sequence of it?
- A - Provincial representative system  
B - Legislative and Executive councils  
C - Senate  
D - Universal Franchise
- (1) A, B, D, C                      (2) A, C, D, B                      (3) B, A, D, C                      (4) B, D, A, C
- Answer the questions 22 and 23 with reference to the informations given below from A to E.
- A - Imposing of new taxes  
B - Collecting taxes by local officers  
C - Changing the posts of the aristocratic leaders  
D - Ordering to pay the taxes in cash  
E - Re-establishment of the Dutch court system
22. What is the answer which contains the causes for the revolt in the maritime provinces against the English Trade Company in 1797 A.D?
- (1) A and C                      (2) A and D                      (3) B and D                      (4) C and D
23. What is the answer which contains the proposals of the Meuron Commission?
- (1) A and B                      (2) A and E                      (3) B and C                      (4) B and E
- Answer the questions 24 to 26 with reference to the statements given below from A to F.
- A - Beginning of the 'Muslim Neisan' newspaper  
B - Establishment of the Colombo Theosophical Society (Parama Vignānartha Movement)  
C - Beginning of the Colombo Sahira College  
D - Beginning of the newspaper 'Udayabhanu'  
E - Taking action to declare the Vesak full moon day as a holiday  
F - Beginning of the Shivangala Vidyalaya
24. What is the answer which consists of factors regarding Sir Henry Steel Olcott?
- (1) A and B                      (2) B and D                      (3) B and E                      (4) C and E
25. What is the answer which includes facts regarding Mr. Siddi Lebbe?
- (1) A and C                      (2) A and D                      (3) B and D                      (4) C and D
26. What is the answer which includes facts regarding Arumuga Navalar?
- (1) A and D                      (2) B and C                      (3) C and D                      (4) D and F
27. What affects to emerge three social classes as capitalist, labour and middle?
- (1) Industrial revolution    (2) French revolution  
(3) Renaissance    (4) Freedom struggle of America
28. According to the constitution of 1978, when the fundamental rights and comprehensive freedom of a citizen is violated, a person should forward a petition to
- (1) Appeal court.                      (2) Supreme court.                      (3) High court.                      (4) Magistrate court.
29. What can be regarded as an occasion in practising the direct democracy?
- (1) Practising of parliamentary debates  
(2) Inquiring the opinion through media  
(3) Holding a referendum  
(4) Practising the proportionate representative system

30. Column I below gives the persons who were popularized during the Renaissance and the column II indicates the fields in which they became popularized. What is the correct answer when column II is matched according to the column I ?

Column I	Column II
1. Michael Angelo	A - Voyages of Discovery
2. Berthalamudiaz	B - Paintings
3. William Harvey	C - Religious Reformation
	D - Medicine

- (1) A, C, D                      (2) B, A, D                      (3) B, C, D                      (4) C, B, D
31. The first ruler who ventured with the aim of establishing a German Empire was  
 (1) Otto Von Bismarck.                      (2) William Keizer II.  
 (3) Von Volk.                      (4) Adolf Hitler.
- Study the pairs of statements/words given under A, B, C and D and answer the questions from 32 to 34.
- A - 1. League of the Nations                      B - 1. World Peace  
 2. United Nations Organization                      2. Economic sanctions
- C - 1. World War II                      D - 1. Environmental pollution  
 2. Israel                      2. Industrialization
32. What is the pair of statement/pair of words which indicate that the development of the second one helps to the development of the first one?  
 (1) A                      (2) B                      (3) C                      (4) D
33. What is the pair of statements/pair of words which point out that the unsuccessfulness of the first one was the cause for the beginning of the second one?  
 (1) A                      (2) B                      (3) C                      (4) D
34. What is the pair of statements/pair of words which indicates that the second one was the result of the first one?  
 (1) A                      (2) B                      (3) C                      (4) D
35. The objective of introducing the Marshall Plan after the World War II was  
 (1) to uplift the devastated countries in Europe.  
 (2) to enhance the socio-economic activities of the colonies.  
 (3) to explain the reasons for allied countries to attend to world wars.  
 (4) to limit the using and production of nuclear weapons.
36. The despotic ruler (dictator) who used the armed soldiers named 'Black Shirt Army' to destroy those who were against the Fascism was  
 (1) Benito Mussolini. (2) Adolf Hitler.                      (3) Woodrow Wilson. (4) Winston Churchill.
- Answer the questions 37 and 38 with reference to the informations given in A and B.
- A - Boston Tea Party  
 B - Attack on the Pearl Harbour
37. With reference to the freedom struggle of America  
 (1) A and B are correct.                      (2) A and B are incorrect.  
 (3) A is correct while B is incorrect.                      (4) A is incorrect while B is correct.
38. With regard to the World War II  
 (1) A and B are correct.                      (2) A and B are incorrect.  
 (3) A is correct while B is incorrect.                      (4) A is incorrect while B is correct.
39. What is the name of the theory that acts tactfully without mediating to warfare for the success of their own political block?  
 (1) Nuclear disarmament                      (2) Control of fuel production  
 (3) Imposing economic sanctions                      (4) Cold War
40. Who was the Yugoslavian President who worked as a pioneering leader in establishing the Non-Aligned Movement?  
 (1) Abdul Gamal Nasar                      (2) Marshal Tito  
 (3) Sri Jawaharlal Nehru                      (4) Lee Kuan Yew

ரகசயம்
--------

ஐ லோகா விஶாஶ டீபார்ட்மென்ட்  
 இலங்கைப் பரீட்சைத் திணைக்களம்  
 ஈ.ஶா.ஶ.(ஶா.ஶேல) விஶாஶ - 2018  
 க.ஶா.த (ஶா.தர)ப் பரீட்சை - 2018

Subject No.  
பாட இலக்கம்

33
----

Subject  
பாடம்

History
---------

**Paper I - Answers**  
**பத்திரம் - விடைகள்**

புள்ன ஈஶகய வினா இல.	பிஶீஶுரேஶி ஈஶகய விடை இல.	புள்ன ஈஶகய வினா இல.	பிஶீஶுரேஶி ஈஶகய விடை இல.	புள்ன ஈஶகய வினா இல.	பிஶீஶுரேஶி ஈஶகய விடை இல.	புள்ன ஈஶகய வினா இல.	பிஶீஶுரேஶி ஈஶகய விடை இல.
1.	1 .....	11.	2 .....	21.	3 .....	31.	2 .....
2.	3 .....	12.	4 .....	22.	2 .....	32.	4 .....
3.	4 .....	13.	3 .....	23.	4 .....	33.	1 .....
4.	2 .....	14.	1 .....	24.	3 .....	34.	3 .....
5.	1 .....	15.	2 .....	25.	1 .....	35.	1 .....
6.	3 .....	16.	1 .....	26.	4 .....	36.	1 .....
7.	2 .....	17.	1 .....	27.	1 .....	37.	3 .....
8.	3 .....	18.	3 .....	28.	2 .....	38.	4 .....
9.	2 .....	19.	1 .....	29.	3 .....	39.	4 .....
10.	4 .....	20.	3 .....	30.	2 .....	40.	2 .....

வினேஶ ஈஶடேஶ் } ஈஶ் பிஶீஶுரகஶ லேஶு  
 விஶேட அஶிஶுஶுத்தல் } ஈஶு சரீயான விடைக்கு

02
----

ஶீஶிஶ்  
 புள்ளி ஶீதம்

ஶுஶ லேஶு/ ஡ாத்தப் புள்ளிகள்  $02 \times 40 = 80$

ஶஶஶ ஶிஶீஶுஶி டீஶ்ஶேஶ ஶரீஶீ ஶஶுஶரஶ ஈஶ்ஶரஶஶுஶே ஶஶஶஶ ஶீஶுஶீ லேஶு ஶுஶுஶ் ஶரஶ்ஶ. கீழ் குறிப்பிடப்பட்டிருக்கும் ஶதாரணத்திஶ்ஶு அ஡ைய பல்ஶேஶ்ஶு வினாக்களுக்குரிய புள்ளிகளை பல்ஶேஶ்ஶு வினாப்பத்திரத்திஶ் இறுதியில் பதிக.

ஶிஶுஶீஶீ பிஶீஶுஶு ஶஶஶஶஶ  
 சரீயான விடைகளிஶ் டீஶாகை

25
----

40
----

I ஶஶுஶீ ஶுஶ லேஶு

பத்திரம் I இஶ் ஡ாத்தப்புள்ளி

50
----

80
----

සියලු ම හිමිකම් ඇවිරිණි | முழுப் பதிப்புரிமையுடையது | All Rights Reserved

ශ්‍රී ලංකා විභාග දෙපාර්තමේන්තුව ශ්‍රී ලංකා විභාග දෙපාර්තමේන්තුව ශ්‍රී ලංකා විභාග දෙපාර්තමේන්තුව ශ්‍රී ලංකා විභාග දෙපාර්තමේන්තුව ශ්‍රී ලංකා විභාග දෙපාර්තමේන්තුව  
 இலங்கைப் பரீட்சைத் திணைக்களம் இலங்கைப் பரීட்சைத் திணைக்களம் இலங்கைப் பரීட்சைத் திணைக்களம் இலங்கைப் பரීட்சைத் திணைக்களம் இலங்கைப் பரීட்சைத் திணைக்களம்  
 Department of Examinations, Sri Lanka Department of Examinations, Sri Lanka Department of Examinations, Sri Lanka Department of Examinations, Sri Lanka Department of Examinations, Sri Lanka  
 ශ්‍රී ලංකා විභාග දෙපාර්තමේන්තුව ශ්‍රී ලංකා විභාග දෙපාර්තමේන්තුව ශ්‍රී ලංකා විභාග දෙපාර්තමේන්තුව ශ්‍රී ලංකා විභාග දෙපාර්තමේන්තුව ශ්‍රී ලංකා විභාග දෙපාර්තමේන්තුව  
 இலங்கைப் பரීட்சைத் திணைக்களம் இலங்கைப் பரීட்சைத் திணைக்களம் இலங்கைப் பரීட்சைத் திணைக்களம் இலங்கைப் பரīட்சைத் திணைக்களம் இலங்கைப் பரīட்சைத் திணைக்களம்  
 Department of Examinations, Sri Lanka Department of Examinations, Sri Lanka Department of Examinations, Sri Lanka Department of Examinations, Sri Lanka Department of Examinations, Sri Lanka

33 E II

අධ්‍යයන පොදු සහතික පත්‍ර (සාමාන්‍ය පෙළ) විභාගය, 2018 දෙසැම්බර්  
 கல்விப் பொதுத் தராதரப் பத்திர (சாதாரண தர)ப் பரீட்சை, 2018 டிசெம்பர்  
 General Certificate of Education (Ord. Level) Examination, December 2018

ඉතිහාසය II  
 வரலாறு II  
 History II

05.12.2018 / 0830 - 1140

පැය තුනයි  
 மூன்று மணித்தியாலம்  
 Three hours

අමතර කියවීමේ කාලය - මිනිත්තු 10 යි  
 மேலதிக வாசிப்பு நேரம் - 10 நிமிடங்கள்  
 Additional Reading Time - 10 minutes

Use additional reading time to go through the question paper, select the questions and decide on the questions that you give priority in answering.

- \* Question No. 1 in Part I is compulsory.
- \* Answer four questions from Part II and one question from Part III.
- \* The total number of questions to be answered is six.

### Part I

1. (a) Mark and name all the historical places given under (i) on the map of Sri Lanka and all the historical places given under (ii) on the segment of the map of world.
  - (i) Gal Oya, Yān Oya, Padaviya Vāva, Minipe anicut, Gampola, Puttalam, Uratota, Negambo, Thiruketheeshavaram, Kālathittha, Dambakola patuna, Minihaḡalkanda (12 marks)
  - (ii) The Vatican, Burma, Calicut, Batavia, Hiroshima, Suez Canal (06 marks)
- (b) (i) Write in order in your answer script, the answers relevant to the historical events indicated under A, B, C and D below.
  - A - The name of the mercenary army of king Vijayabāhu I
  - B - The Portuguese navigator who came to India in 1498 A.D.
  - C - The British Prime Minister who gave the leadership to allied parties during the World War II
  - D - The Emperor who ruled Japan during the World War II (04 marks)
- Study the pictures given under A and B and write the answers to the questions in order in your answer script.

- (ii)
  1. What is the name of the sculpture depicted in A?
  2. In which religious place could it be seen?
  3. Who has been identified to be the person who represent in this?
  4. To what period of kingdom of Sri Lanka does this creation belong? (04 marks)



A

- (iii)
  1. State the name of the person who appears in the picture B.
  2. In which kingdom of Sri Lanka did he rule?
  3. By which name he was known before ascending to the throne?
  4. Name the person who has been considered as the artist of this picture. (04 marks)



B

සියලු ම හිමිකම් ඇවිරිණි | முழுப் பதிப்புரிமையுடையது [All Rights Reserved]

ශ්‍රී ලංකා විභාග දෙපාර්තමේන්තුව ශ්‍රී ලංකා විභාග දෙපාර්තමේන්තුව ශ්‍රී ලංකා විභාග දෙපාර්තමේන්තුව ශ්‍රී ලංකා විභාග දෙපාර්තමේන්තුව ශ්‍රී ලංකා විභාග දෙපාර්තමේන්තුව  
 இலங்கைப் பரீட்சைத் திணைக்களம் இலங்கைப் பரීட்சைத் திணைக்களம் இலங்கைப் பரීட்சைத் திணைக்களம் இலங்கைப் பரීட்சைத் திணைக்களம் இலங்கைப் பரීட்சைத் திணைக்களம்  
 Department of Examinations, Sri Lanka Department of Examinations, Sri Lanka Department of Examinations, Sri Lanka Department of Examinations, Sri Lanka Department of Examinations, Sri Lanka

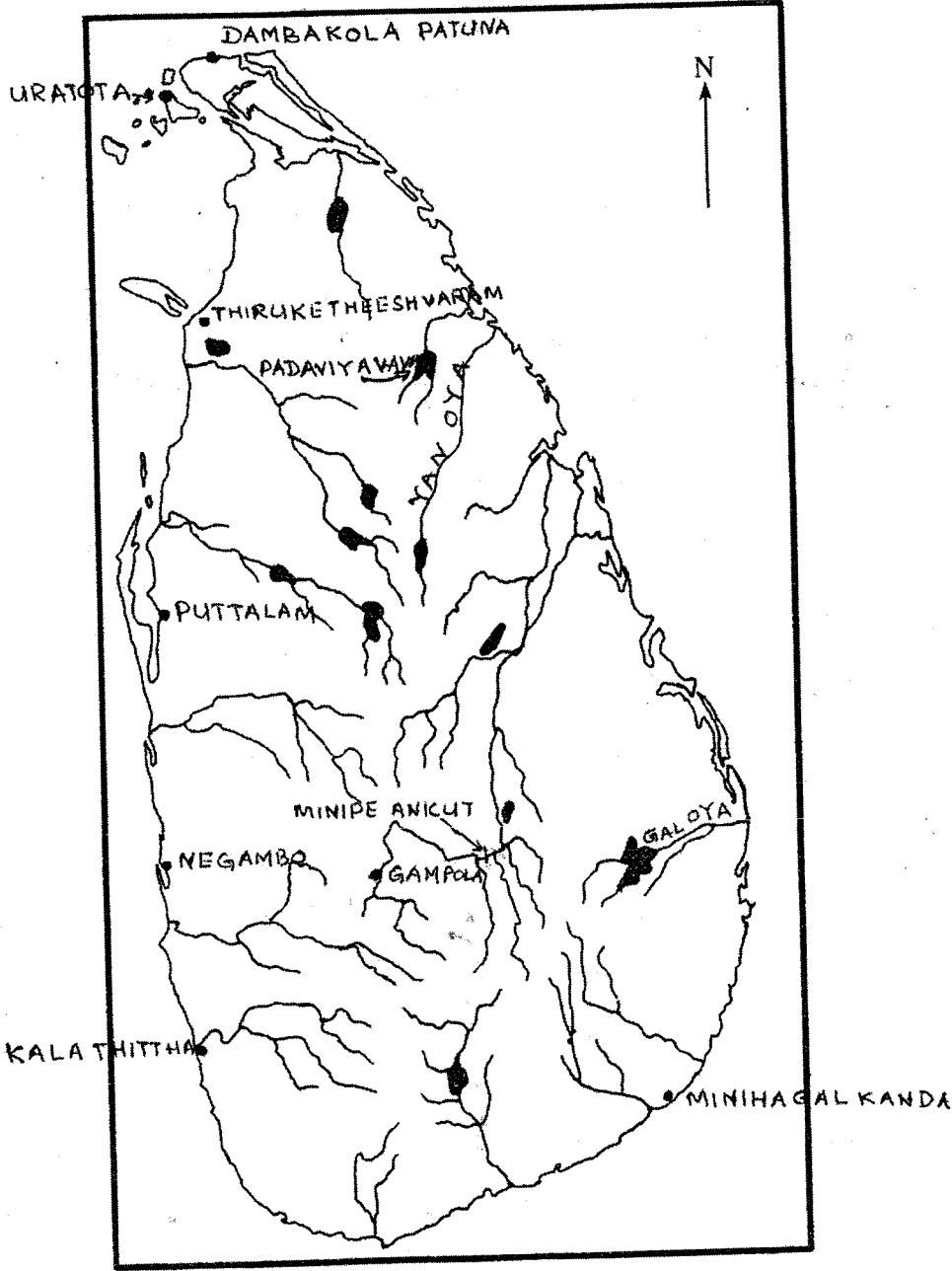
**33 STE II**

**අධ්‍යයන පොදු සහතික පත්‍ර (සාමාන්‍ය පෙළ) විභාගය, 2018 දෙසැම්බර්**  
**கல்விப் பொதுத் தராதரப் பத்திர (சாதாரண தர)ப் பரீட்சை, 2018 டிசம்பர்**  
**General Certificate of Education (Ord. Level) Examination, December 2018**

ඉතිහාසය	II
வரலாறு	II
History	II

- 1. (අ) (i)
- 1. (அ) (i)
- 1. (a) (i)

විභාග අංකය }  
 சுட்டுடன் } .....  
 Index No. }



- 1. (a) (ii)
- 1. (a) (ii)
- 1. (a) (ii)

