

සියලු ම හිමිකම් ඇවිරිණි]
 முழுப் பதிப்புரிமையடையது]
 All Rights Reserved]

ශ්‍රී ලංකා විභාග දෙපාර්තමේන්තුව / இலங்கைப் பரீட்சைத் திணைக்களம் / Department of Examinations, Sri Lanka

Open Competitive Examination for Recruitment to Class 3 Grade III of
 Information and Communication Technology Service - 2014 (2015)

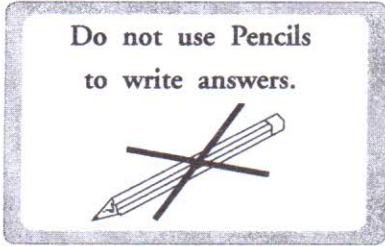
(i) ICT Written Test

Two hours

Instructions to Candidates

Very Important :

Do not use Pencils
 to write answers.



* Answer scripts where the numbers are not written as indicated below will not be marked / evaluated.

1 2 3 4

Write your Index Number here, and
 on pages 3 and 5 in the spaces
 indicated.

.....

Checked as correct

.....

Invigilator's Initials

Important :

- * This paper consists of 75 questions on 10 pages.
- * Before answering the paper arrange all the pages in order.
- * Answer all questions on this paper itself.
- * The time allowed for this paper is two hours.
- * Commence answering only after the Centre Supervisor's announcement.
- * Instructions given should be strictly followed in answering this paper and marks will not be awarded for answers not in accordance with these instructions.
- * Use of calculators is not allowed.
- * Even if you are not attempting the paper hand it over to the Supervisor.
- * Write the answers clearly and legibly in blue or black ink only and not in pencil.
- * It is an offence to remove this paper from the examination hall or turn out photocopies of the same.
- * Answer scripts with illegible figures, illegible handwriting, those where erasing fluid has been used and written in pencil will not be marked / evaluated.

For Examiner's use only

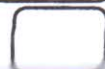
Page No.	Question No.	Marks Awarded
2	1 - 10	
3	11 - 21	
4	22 - 30	
5	31 - 39	
6	40 - 50	
7	51 - 56	
8	57 - 61	
9	62 - 66	
10	67 - 71	
11	72 - 75	
Total		

Final Score

In figures	
In words	
Marking Examiner	
Checked by	

● For questions from No. 1 to 50, select the correct or the most appropriate answer and write the number of the relevant choice on the dotted line provided against the question

1. Which of the following is **not** an essential component of a computer?
(1) Monitor (2) CPU
(3) CD-ROM (4) Memory (.....)
2. What is the technique that extends storage capacity of the main memory beyond the actual size?
(1) multitasking (2) virtual storage
(3) multiprocessing (4) switching (.....)
3. Which of the following can be used to both input output data?
(1) keyboard (2) touch screen
(3) scanner (4) mouse (.....)
4. Which software installation option would allow you to select the components you wish to install?
(1) Typical (2) Portable
(3) Full (4) Custom (.....)
5. "Software is any that tells what to do."
Which of the following pair of words best suits to fill the two blanks of this statement respectively?
(1) program, device (2) code, hardware
(3) instruction, CPU (4) set of instructions, hardware (.....)
6. A print queue includes a list of
(1) all the users who have access to that printer.
(2) printers that have been used in the office within the day.
(3) documents commanded to be printed in that printer by all the users.
(4) documents that have been printed on this printer, within the day. (.....)
7. Which of the following would indicate that the motherboard battery has failed?
(1) Operating system passwords are lost.
(2) Files on the hard disk are lost or corrupted.
(3) Settings of virtual memory, revert to default values.
(4) Current date and time revert to the default values. (.....)
8. Which of the following is an advantage of 'a switch' over 'a hub'?
(1) Reducing network traffic
(2) Preventing spread of viruses
(3) Connecting a computer directly related to the internet
(4) Managing password security at a workstation (.....)
9. Which of the following statements about 'Read Only Memory (ROM)' is true?
(1) Application programs can write data to ROM.
(2) The contents of ROM are not deleted when the computer is switched off.
(3) Web pages are stored in ROM while they are being loaded.
(4) The contents of ROM are deleted when the computer is switched off. (.....)
10. Zip is a (an) file
(1) compressed (2) system
(3) program (4) executable (.....)



11. A which is also known as pen drive, thumb drive, key drive or jump drive is an excellent way to transfer photos from one computer to another.
(1) USB flash drive (2) Hard drive
(3) CD ROM (4) DVD (.....)
12. Internet runs on protocol.
(1) http (2) ftp (3) tcp/ip (4) ip (.....)
13. http stands for
(1) hot text termination protocol.
(2) high text transfer protocol.
(3) hyper text transfer protocol.
(4) high text termination protocol. (.....)
14. Which of the following **not** a function of an anti-virus software?
(1) it makes Internet secure.
(2) it scans all the incoming files.
(3) it stops virus coming into your computer.
(4) it makes file downloading efficient. (.....)
15. Facebook is a network.
(1) communication (2) software (3) media (4) social (.....)
16. A junk email is a
(1) virus (2) spam (3) attachment (4) film (.....)
17. Which of the following is true with respect to URL?
(1) URL stands for 'Universal Resource Locator.'
(2) It refers to a directory path of a file.
(3) It has no relationship with an IP address.
(4) We can access a web site using a URL. (.....)
18. Which of the following **cannot** be used for chatting?
(1) Google (2) Yahoo (3) Skype (4) Linux (.....)
19. Which of the following is **not** correct with respect to 'WWW'?
(1) A web address should begin with WWW.
(2) It is a collection of millions of web pages.
(3) WWW can be anywhere in a web address.
(4) It may have sound and video files. (.....)
20. Which of the following is a copy of an email message sent to a recipient whose email address does not appear in the message?
(1) CC (2) To (3) BCC (4) Sender (.....)
21. Which of the following is the most serious damage an unauthorized user could cause through logging in to the system administrator's computer?
(1) Accessing backup logs
(2) Changing access to printers
(3) Changing desktop background
(4) Changing the system administrator's password (.....)

